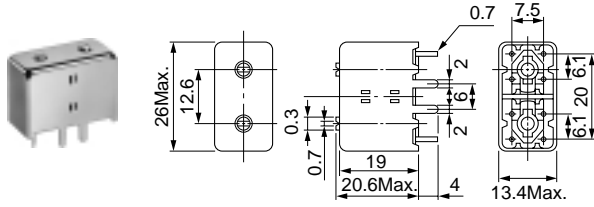


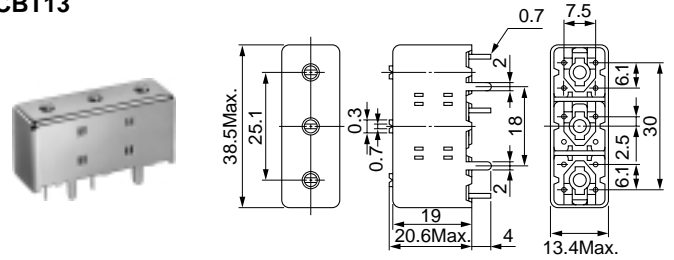
### CBW13 Double Tuned CBT13 Triple Tuned Frequency Range: 130~220MHz

#### CBW13



(Unit: mm)

#### CBT13



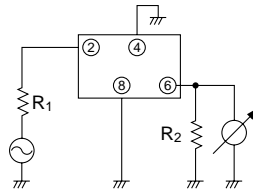
(Unit: mm)

#### Examples of electrical characteristics 電気的特性例

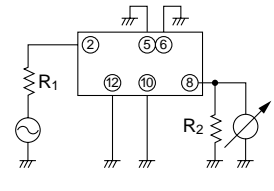
Item	Type	CBW13	CBT13
Center Frequency		145MHz	145MHz
Bandwidth, at 1dB		3MHz	3MHz
Attenuation	fo + 10MHz	20dB	28dB
	fo - 10MHz	22dB	35dB
Ripple		0.3dB	0.5dB
Insertion Loss		1.3dB	2dB
Impedance		50Ω	50Ω

#### Test circuits (bottom view) 測定回路

##### CBW13

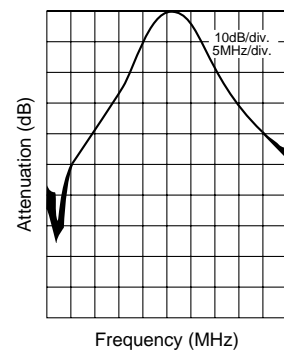
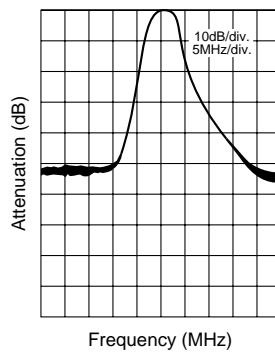
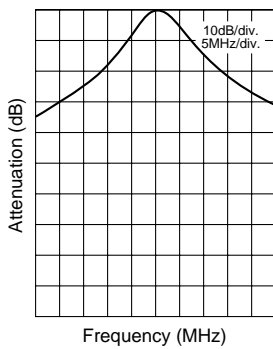
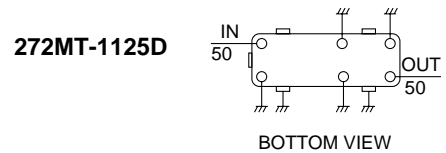
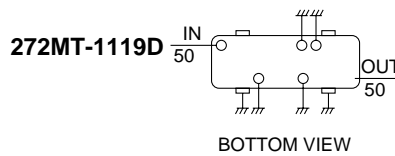
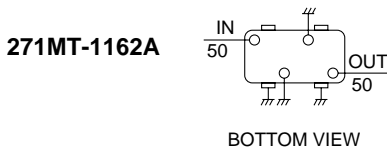


##### CBT13



Note: Case lugs must be grounded.

#### Characteristics 特性曲線



*continued from previous page*

前頁より続く

**SELECTION GUIDE FOR STANDARD FILTERS**
**TYPE CBW13 (Double tuned)**

東光品番	中心周波数	帯域幅	選択度		リップル	挿入損失
TOKO Part Number	Center Frequency (MHz)	Bandwidth (-1dB) (MHz) min.	Selectivity		Ripple (dB) max.	Insertion Loss (dB) max.
			Fo - 15MHz (dB) min.	Fo + 15MHz (dB) min.		
271MT-1149A	99	3.0	30	20	1.0	3.0
271MT-1150A	103	3.0	30	20	1.0	2.5
271MT-1151A	107.5	3.0	30	20	0.5	2.5
271MT-1152A	111	3.0	30	20	0.5	2.5
271MT-1153A	115	2.0	32	22	0.5	2.5
271MT-1154A	119	2.5	30	22	0.5	2.0
271MT-1155A	122	2.0	29	27	0.5	2.5
271MT-1156A	126	3.0	25	24	0.5	2.5
271MT-1157A	131	3.0	24	23	0.5	2.5
271MT-1158A	138	2.0	28	24	0.5	2.5
271MT-1159A	146	2.5	27	23	0.5	2.5
271MT-1160A	154	2.5	25	21	0.5	2.5
271MT-1161A	164	2.5	28	25	0.5	3.0
271MT-1162A	171	2.5	20	18	0.5	2.5
271MT-1163A	182.5	3.0	23	20	0.5	3.0
271MT-1164A	194.5	2.5	27	24	0.5	3.0
271MT-1165A	207.5	2.5	26	23	0.5	3.0
271MT-1166A	220	2.0	20	18	0.5	3.0

**TYPE CBT13 (Triple tuned)**

東光品番	中心周波数	帯域幅	選択度		リップル	挿入損失
TOKO Part Number	Center Frequency (MHz)	Bandwidth (MHz) min. (dB)	Selectivity		Ripple (dB) max.	Insertion Loss (dB) max.
			Fo - ( )MHz (dB) min.	Fo + ( )MHz (dB) min.		
272MT-1173A	100	4.0 (BW3)	30 (15)	30 (15)	1.0	4.0
272MT-1230D	107	3.0 (BW3)	33 (10)	22 (15)	1.0	4.5
272MT-1180A	110	3.0 (BW3)	37 (10)	30 (10)	1.0	5.5
272MT-1177D	124	3.5 (BW3)	21 ( 6)	17 ( 6)	1.0	3.5
272MT-1175D	130	3.0 (BW3)	21 ( 5)	18 ( 5)	1.0	5.5
272MT-1176D	133.7	3.5 (BW3)	23 ( 6)	18 ( 6)	1.0	3.5
272MT-1116A	134	5.0 (BW1)	24 (15)	24 (15)	1.0	3.0
272MT-1169D	137.5	2.0 (BW1)	35 (10)	30 (10)	1.0	4.5
272MT-1117D	140.21	3.7 (BW1)	26 (10)	25 (10)	1.0	3.0
272MT-1119D	143	3.0 (BW1)	35 (10)	22 (10)	1.0	4.0
272MT-1006A	145	2.8 (BW3)	25 ( 6)	25 ( 6)	5.0	8.0
272MT-1008A	145	1.2 (BW3)	30 ( 6)	30 ( 6)	5.0	8.0
272MT-1181D	147	4.0 (BW3)	20 ( 6)	15 ( 6)	1.0	3.5
272MT-1219A	156.7	1.5 (BW3)	33 ( 6)	25 ( 6)	1.0	7.0
272MT-1124D	157	3.5 (BW3)	17 ( 6)	13 ( 6)	1.0	3.5
272MT-1174A	159	7.0 (BW3)	35 (20)	33 (20)	1.0	3.0
272MT-1123A	160	2.0 (BW3)	17 ( 5)	15 ( 5)	1.0	6.0
272MT-1221A	161	2.2 (BW1)	32 (10)	40 (10)	1.0	4.5
272MT-1218A	161.3	1.5 (BW3)	30 ( 6)	25 ( 6)	1.0	7.0
272MT-1148A	164	1.0 (BW3)	30 ( 5)	25 ( 5)	1.0	8.5

*continued on next page*

次頁へ続く

*continued from previous page*

前頁より続く

**SELECTION GUIDE FOR STANDARD FILTERS**
**TYPE CBT13 (Triple tuned)**

東光品番	中心周波数	帯域幅	選択度		リップル	挿入損失
TOKO Part Number	Center Frequency (MHz)	Bandwidth (MHz) min. (dB)	Fo - ( ) MHz (dB) min.	Fo + ( ) MHz (dB) min.	Ripple (dB) max.	Insertion Loss (dB) max.
272MT-1118D	165	3.9 (BW1)	15 (10)	16 (10)	1.0	3.0
272MT-1120A	169	3.5 (BW3)	35 (10)	25 (10)	1.0	6.0
272MT-1125D	171	4.4 (BW1)	16 (10)	14 (10)	1.0	2.5
272MT-1126F	177	4.0 (BW1)	15 (10)	13 (10)	1.0	3.0
272MT-1127F	183	4.0 (BW1)	17 (10)	17 (10)	1.0	3.0
272MT-1131A	185	3.0 (BW3)	24 ( 6)	20 ( 6)	1.0	5.0
272MT-1128F	189	4.0 (BW1)	19 (10)	18 (10)	1.0	3.5
272MT-1208A	194.5	3.0 (BW3)	40 (15)	35 (15)	1.0	4.5
272MT-1129F	195	4.2 (BW1)	18 (10)	18 (10)	1.0	3.0
272MT-1182A	196	3.0 (BW3)	32 (10)	25 (10)	1.0	5.0
272MT-1195A	200	3.0 (BW3)	19 ( 6)	17 ( 6)	1.0	7.0
272MT-1130F	201	4.5 (BW1)	16 (10)	16 (10)	1.0	3.0
272MT-1132A	215	4.0 (BW3)	15 ( 6)	14 ( 6)	1.0	4.0
272MT-1209A	220	5.0 (BW3)	40 (15)	30 (15)	1.0	4.5
272MT-1146A	223	4.0 (BW3)	24 (10)	18 (10)	1.0	4.5
272MT-1188A	226.4	2.5 (BW1)	32 (10)	25 (10)	1.0	6.0
272MT-1013A	170	1.5 (BW3)	25 ( 6)	25 ( 6)	5.0	8.0
272MT-1007A	170	1.0 (BW1)	31 ( 5)	30 ( 5)	5.0	9.0
272MT-1080A	223	2.6 (BW1)	28 (10)	40 (20)	5.0	6.0